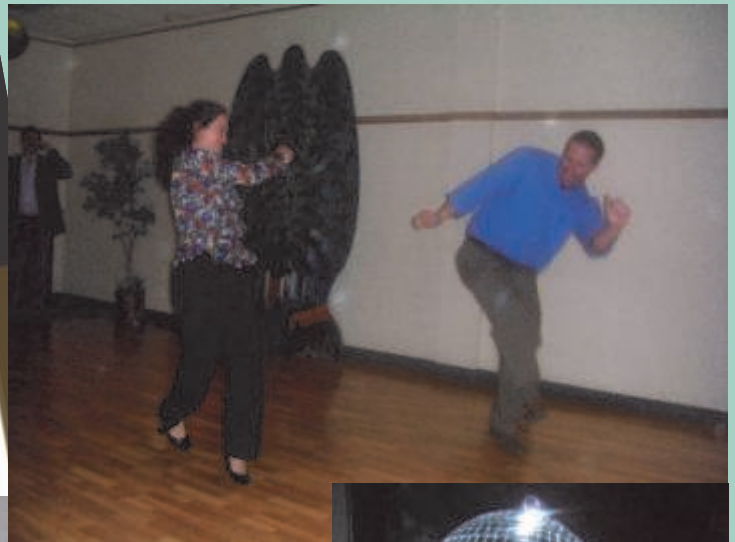




### Mark the Date — April 6th, 2012 Annual Meeting & Dancing With the Loggers



Who can believe another year has flown by! We are already planning the 2012 Annual Meeting & Log-A-Load Fundraiser, "Dancing with the Loggers". Mark the date now, for a day of professional development & fun!

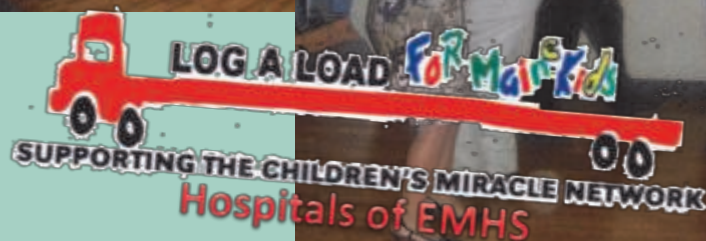
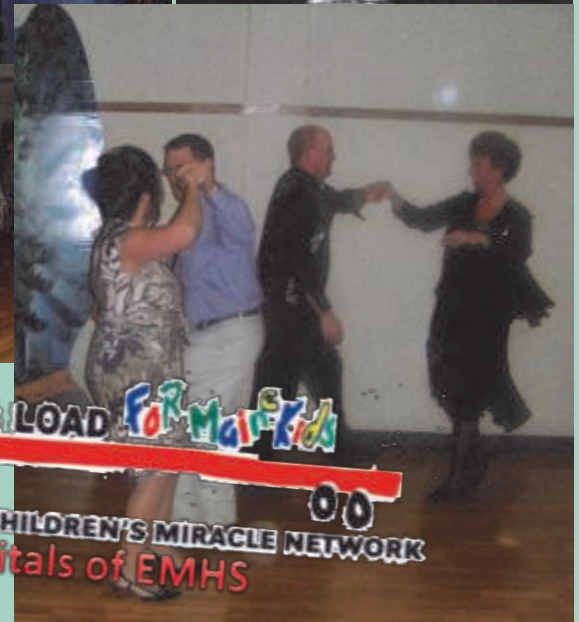
In 2012, even if we can't get you on the dance floor, you CAN raise money for Log-A-Load! Each PLC Member Company will have their own website to help. Your employees, family members and vendors can easily help the Kids by donating on-line! Then you can select a "Logger Couple" to support at the dance off.

Last year Members raised **\$19,789.48!**

#### What Can You Raise in 2012?

Mark the Date and Get Ready to Help Log-A-Load for Kids and the Children's Miracle Network Hospitals!

Watch for your link and instructions to get fundraising for the kids. **Don't Miss The Fun!**



## PLC Takes Stand On National Park

“Despite the rhetoric from Roxanne Quimby and other park supporters about jobs, when you look at the facts, a National Park is a bad idea for Maine,” Mike stated at a recent **“Don’t Fence ME In”** event in Lincoln. On November 7th at the Lincoln Center VFW hall PLC announced its position on the proposed Park and feasibility study.

Representative Jeff Gifford hosted the event which was the showing of "For the Good of All", a video about what happened to the town of Everett, Ohio when the National Park Service entered their lives. This video originally aired by PBS "Frontline" is narrated by Jessica Savitch in 1983 and covers the creation of a Federal Park in the Cuyahoga Valley National Recreation Area in Ohio.

Representative Jeff Gifford remarked, “We were excited that PLC made this announcement at the viewing and they have joined us in this battle.”

Mike continued, “It’s what many of you instinctively know and some of you know but are trying to overlook. Nationally in states where National Parks are present, the forests are more susceptible to catastrophic forest fires, the Forest Products industry is in disarray, and the health of the forests has actually gotten worse. As good stewards of the forest, our loggers have looked at Quimby’s plan and can read between the “cut” lines, this is about federal control. PLC and our loggers do not have to rely on “what if” or “what may be” or even Quimby’s intended results with regard to a National Park. They look at history, that’s right history, the facts of what has happened out West and in Ohio. In states where National Parks are present, like Washington and Oregon, the forests are more susceptible to catastrophic forest

fires and studies show that the health of the forests has actually gotten worse. If we take a look at the record of forest management by the federal government in the Northwest, we get a preview of Federal forest management in Maine. Take for instance the Northwest Forest Plan adopted in 1994 which dramatically changed the management on 24 million acres of federal forests in northern California, Oregon and Washington and reduced the historic timber sale program by 80%. In real numbers the timber sale program went from 5 billion board feet (bbf) per year to 1.1 billion board feet per year. Those types of declines would be catastrophic to Maine’s forest products industry and that’s not something our members are interested in.” Scott Hanington, longtime PLC member and owner of Hanington Timberlands in Wytopitlock concurred, “Maine’s traditional use of land in the forest products industry has long proved successful in ensuring a healthy forest, with public access.” Hanington added “our history shows there is not a need for a National Park to ensure access to Maine’s woods for all of us to ski, hunt and snowmobile.”

Maine’s large swaths of forest lands, praised for their beauty, are the product of an active and vibrant logging and forest products industry. According to the Maine Department of Conservation, the percentage of forested land in Maine remains at 90%. Private landowners have insured that land has not only remained forested but healthy. Conversely, in areas where the Federal government has been placed in charge of forest lands, the forests and the forest products industry suffers, regardless of which party controls the White House.



This is the real story of the impact of federally managed lands. In many Maine towns, our forest products industry is vital for direct and indirect employment. We can little afford to replace 80% of good paying full time manufacturing, logging, equipment sales and service private sector jobs with part-time federal park jobs. Neither can we afford to let Maine’s forests go the way of the forests of the American West with threats from both fire and disease. Not to mention, it is another federal tax burden for all Americans. In short, a National Park is a bad idea for Maine, it is certainly no gift.

**We encourage you to watch the video and forward to friends and family.**

**Here’s the link**

<http://www.landrights.org/VideoForTheGoodOfAll.wmv>

**Or see our link on facebook!**

